



≡ hoxter

UKA series





Details truly matter

When we design our products we focus on even the smallest of details. It is this attention to detail that is vital to the long lifespan, unproblematic functionality and user friendliness of our appliances.

In addition to these thoughtful details our UKA models excel due to their strength, up to date technologies and precision manufacturing.





Easy installation

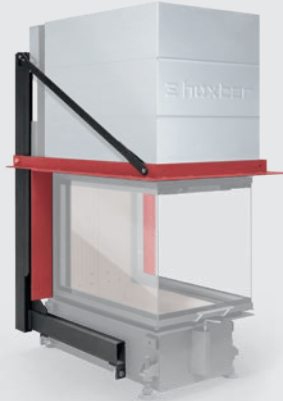
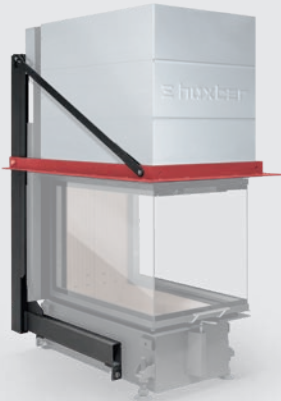
Pure individuality is the main value when designing a fireplace. That is why we don't want to limit the imaginations of the designer. Every UKA model offers a choice of connecting the external air from up to four different directions and thanks to the interchangeable smoke outlets both vertical or horizontal connections are possible.

Maintenance openings are hidden in the body of the fireplace and allow access to every moving part from within. This means that no additional and noticeable access openings are required on the outside.



Build on frame that holds

Optional build on frames provide additional support for construction of the fireplace cladding and are available in three, five or eight sided options. With a load capacity of 200kg(440lbs) these support frames are attached to the fireplace insert in a way that eliminates the thermal expansion of the steel and therefore prevents the possibility of the outer cladding from cracking.



Heat storage systems

The robust construction of our fireplace inserts along with the top quality components used allow for the three sided UKA models to be used with accumulation channels as part of a radiant thermal mass heating system. The minimum radiant surface area as well as the tested length of accumulation channels can be found in the technical data sheets for each unit. A bypass damper is recommended for heat storage systems.

Heat storage systems do not require open venting to circulate convection heat but rather provide long lasting radiant heat that is stored into the units thermal mass cladding.



Electronically regulated damper control

To optimize the burning process UKA models can be equipped with an automatic damper. A thermo sensor, which is easily accessible through the fire chamber, along with a magnetic door contact send the temperature and door position to the ABRA 6.1 control unit.



ABRA 6.1

The ABRA 6.1 control unit dynamically doses the optimal amount of combustion air to the fireplace based on the temperature reached in the fire chamber. For easy installation the central unit of the ABRA 6.1 is equipped with inputs distinguished by different colors. The air damper is equipped with a spring to open automatically in case of a power outage. A wireless display shows the most vital data of the burning process.

Individual design options

A light or dark firebrick lining is available. The colour of the firebrick is integral and not just on the surface of the brick. Door and air damper handles are available in both stainless steel or with a black teflon coating.

Also available is a wide portfolio of cover and build on frames. Custom dimensions are available upon request.



Dark refractory

Dark refractory is made from a black mixture fireclay. To guarantee the best mechanical capabilities of the material, the fireclay is cooked in a furnace for 72 hours. To support the quality of the materials we give two years warranty for the fireclay.



Black control elements

Door handle and the air control element may be ordered also in black execution. Black surface of these elements is achieved with special teflon treatment of a stainless steel. Such black surface is permanent and resistant to both high temperature and abrasion.



Clean glass

Clean and clear glass is the most important aspect for the consumer and we know how to achieve this. In addition to an airtight fire chamber, the combustion air has to be well balanced and introduced in the right position on the door frame. For models with a deeper fire chamber, additional combustion air openings are provided and balanced for optimal combustion.

Individual air channel set-up

Under standard conditions the distribution ratio between primary combustion air and for the air wash are factory pre set. But there may be special conditions where you need to distribute the air onto the glass unequally. On the UKA models the top air feeding bar is divided into three pieces and therefore each may be set individually. This guarantees that the glass will be clean under any condition.

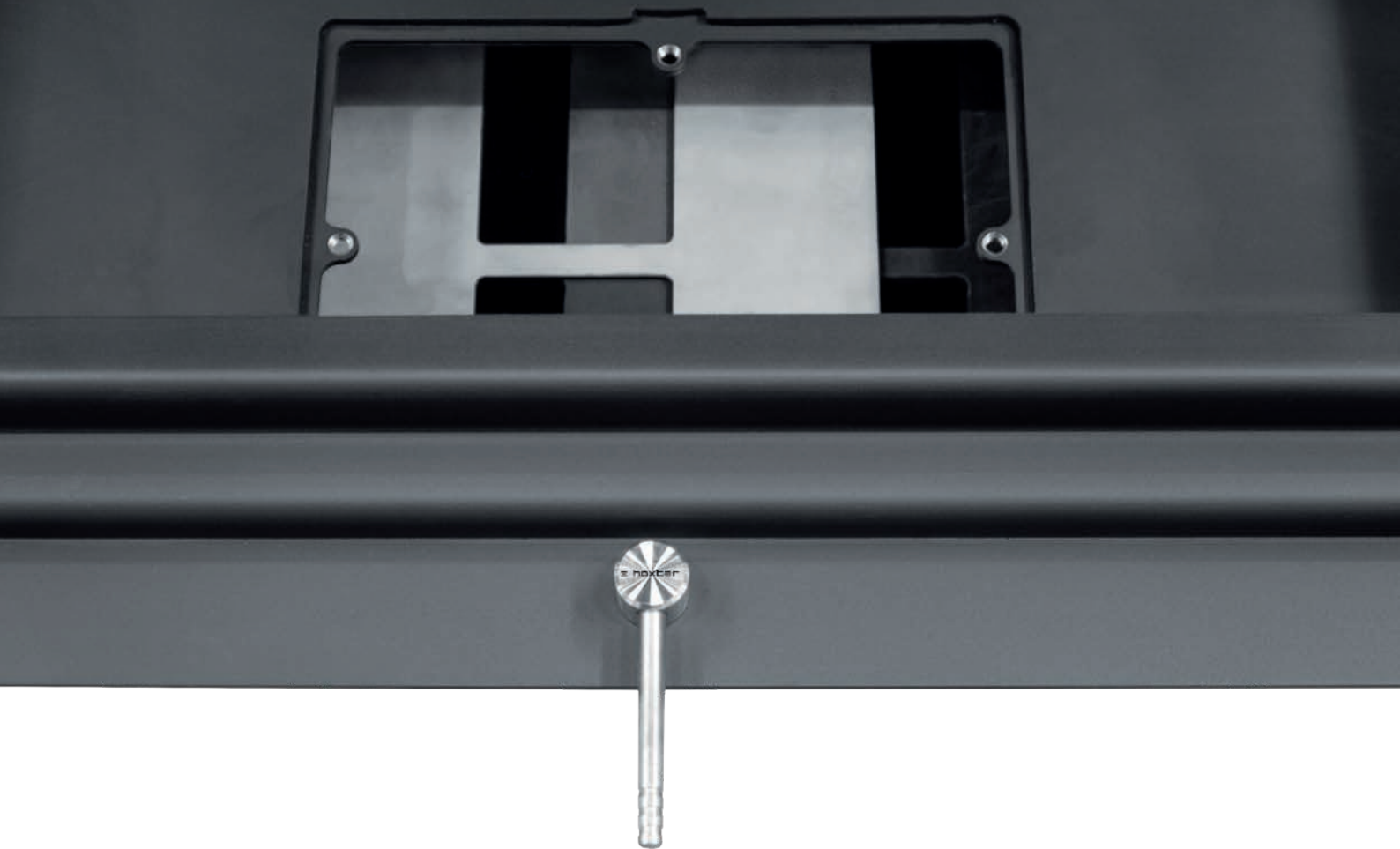


Excentric roller

The doors are equipped with four excentric rollers which may be set individually to guarantee that the door contact is air tight. Due to the airtightness of these doors they can be operated in air tight homes without issue.







Easy control

Hoxter fireplace inserts are so airtight that the flame reacts immediately upon movement of the air control system. The air control system has been optimized to guarantee smooth and quiet operation.



Liftdoor system

Four double bearing rollers take care of the lifting of the door. They are pressed via a spring into a stainless steel rail and hence eliminate the risk of sticking during operation. When closing the doors, the rails are equipped with a bent to guarantee the air tightness. Rollers are self greasing so no additional maintenance is required.





Serviceability and guarantee

All moving parts, including the complete lift door system, are fully accessible and serviceable from within the fire chamber. The access points are hidden behind the firebrick liner.

We back the quality of our products and give a 5 year warranty to the body of the fireplace. A 2 year warranty is offered on all other parts including the glass and firebrick liner.



UKA Models



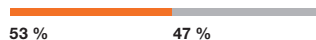
UKA 35/60/35/50Sh



Output capacity connected to the chimney **5–12 kW**

Amount of firewood per heating cycle **3,5 kg**

Ratio heat distribution



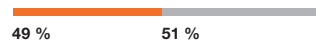
UKA 37/55/37/57h



Output capacity connected to the chimney **6–12 kW**

Amount of firewood per heating cycle **4 kg**

Ratio heat distribution



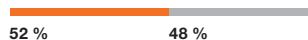
UKA 37/75/37/57h



Output capacity connected to the chimney **8–14 kW**

Amount of firewood per heating cycle **4,5 kg**

Ratio heat distribution



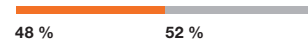
UKA 37/95/37/57h



Output capacity connected to the chimney **9–17 kW**

Amount of firewood per heating cycle **5 kg**

Ratio heat distribution



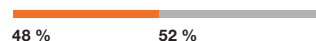
UKA 56/50/56/52h



Output capacity connected to the chimney **5–12 kW**

Amount of firewood per heating cycle **4,5 kg**

Ratio heat distribution



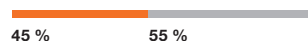
UKA 69/48/69/51h



Output capacity connected to the chimney **6–12 kW**

Amount of firewood per heating cycle **4,5 kg**

Ratio heat distribution



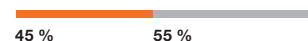
UKA 86/50/86/52h



Output capacity connected to the chimney **8–15 kW**

Amount of firewood per heating cycle **5 kg**

Ratio heat distribution



■ Fireplace insert (+ attached storage mass)
■ Door glass (single glazing)

HOXTER GmbH

Hersbrucker Straße 23
91244 Reichenschwand
DEUTSCHLAND
Tel.: +49 (0)9151 8659 163
E-mail: info@hoxter.de

Hoxter a.s.

Jinačovice 512
66434 Jinačovice
CZECH REPUBLIC
Tel.: +420 518 777 701
E-mail: info@hoxter.eu

STAND 06/2019
EN-M1000236

www.hoxter.eu

